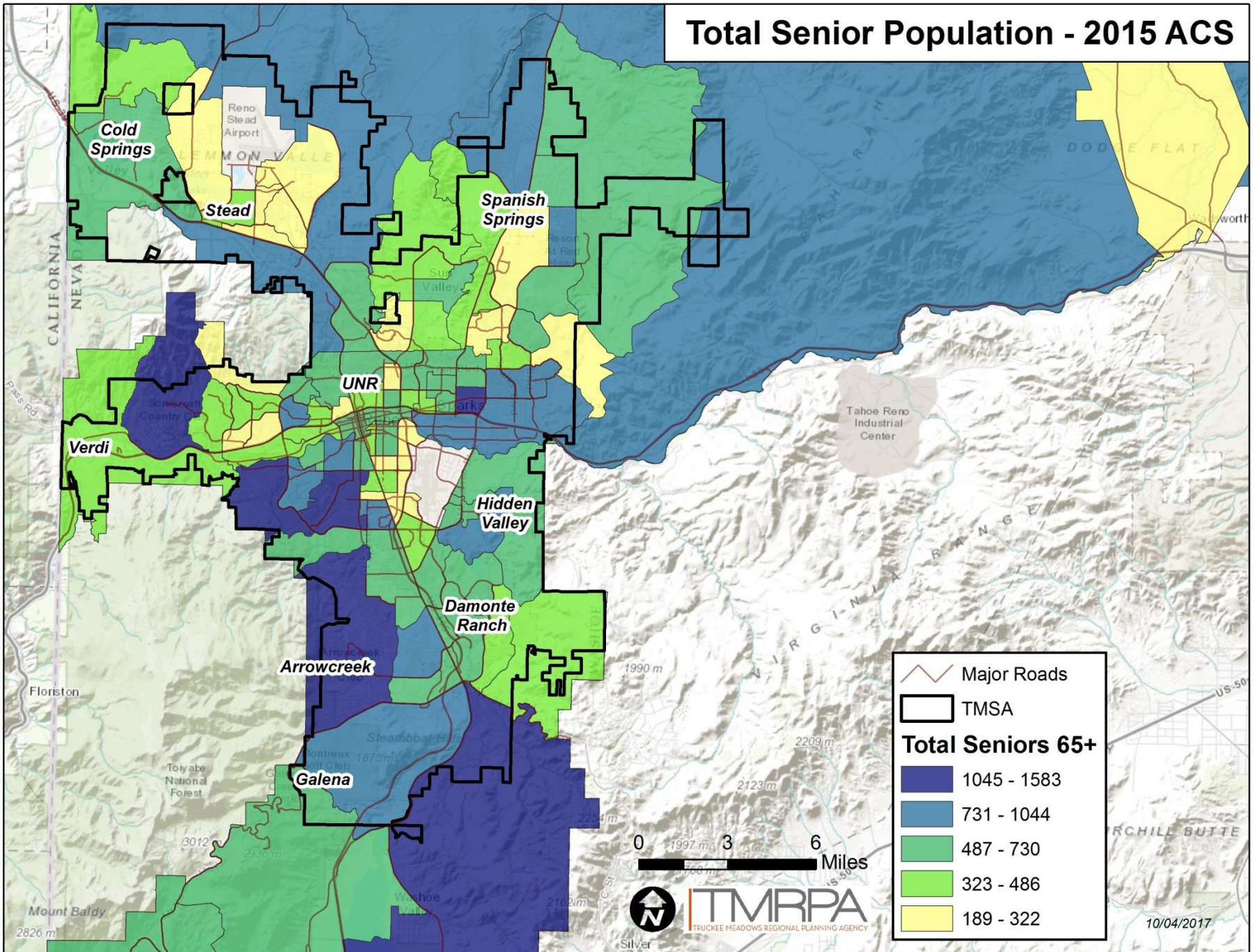
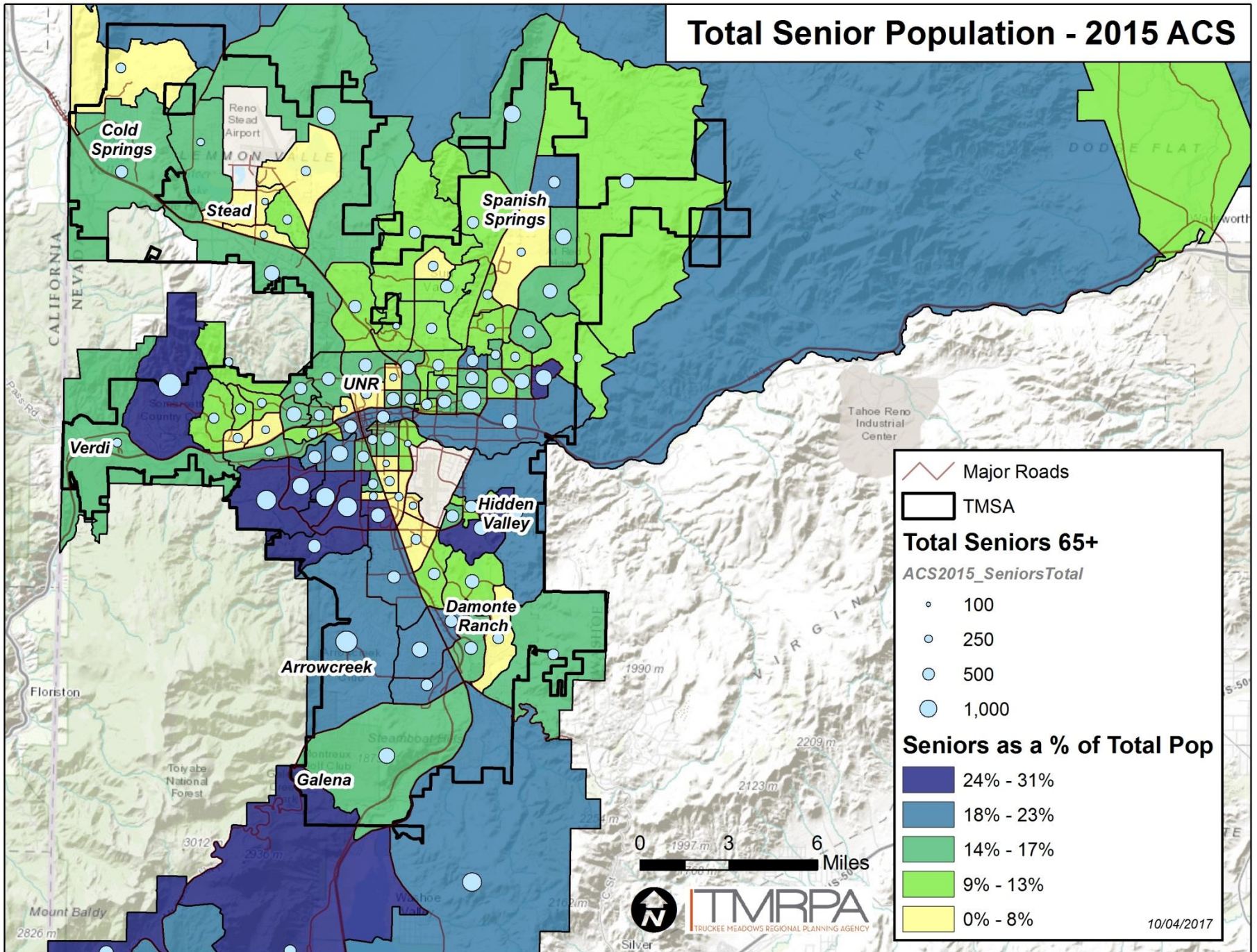


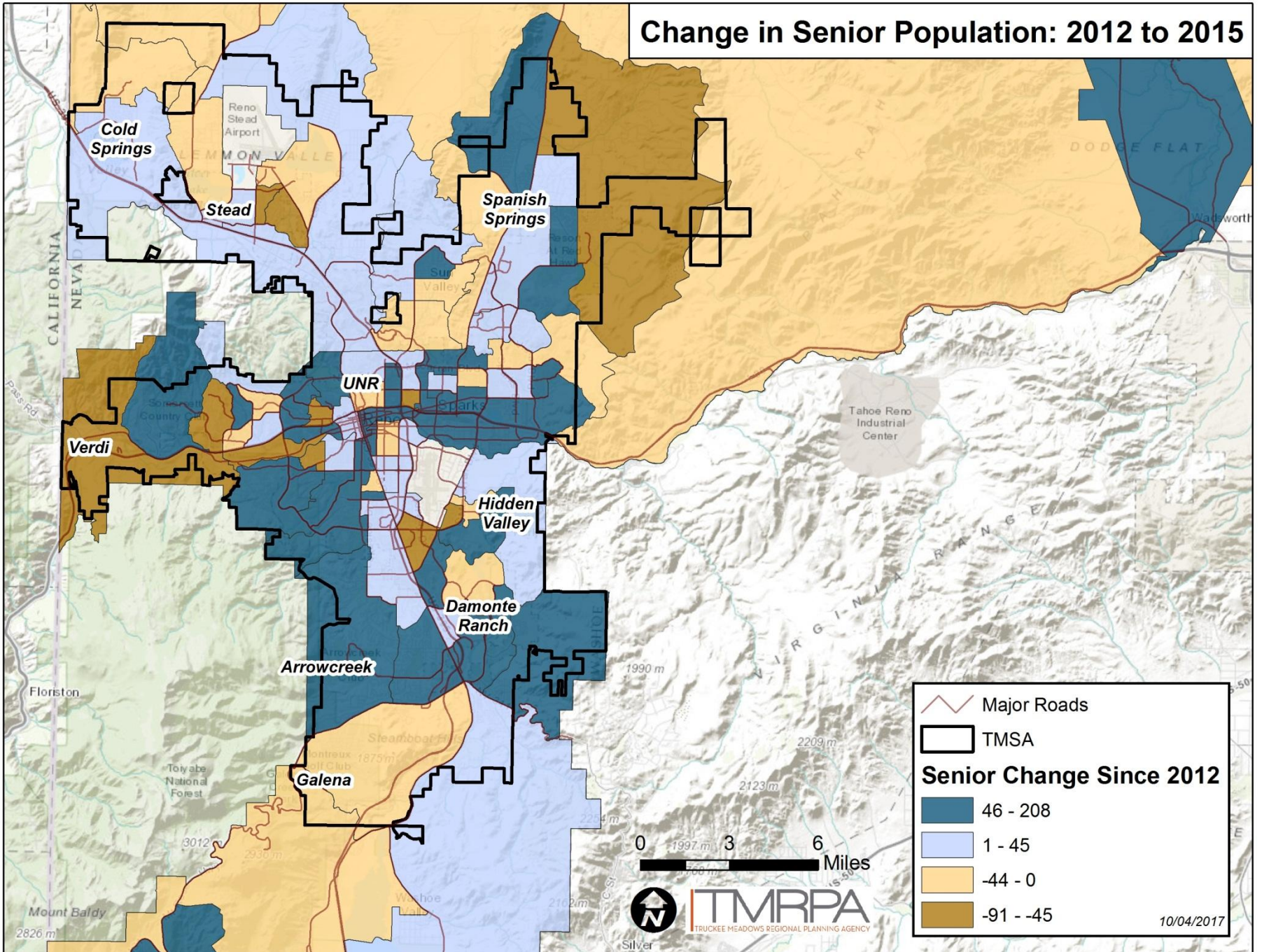
# Total Senior Population - 2015 ACS



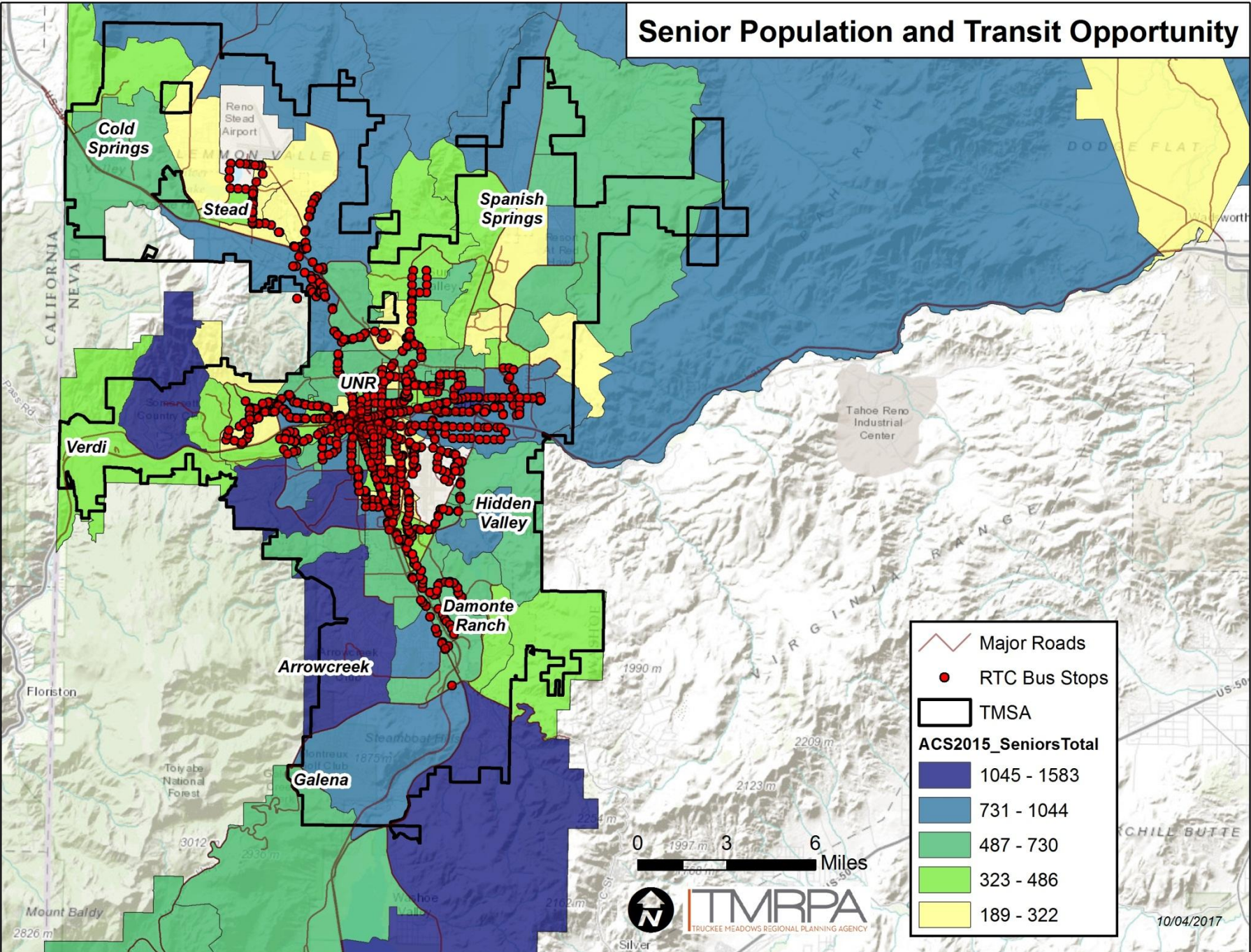
# Total Senior Population - 2015 ACS



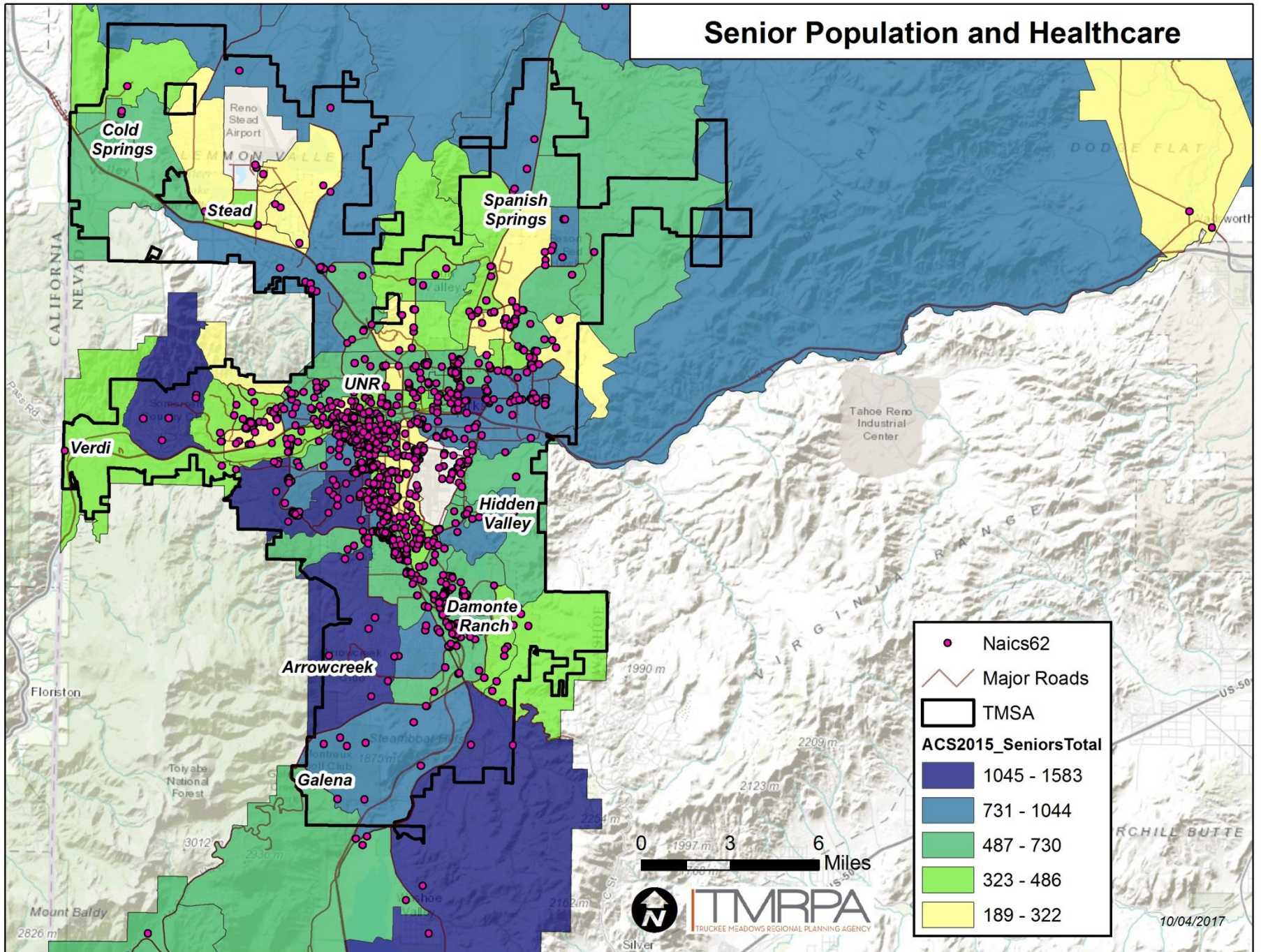
# Change in Senior Population: 2012 to 2015

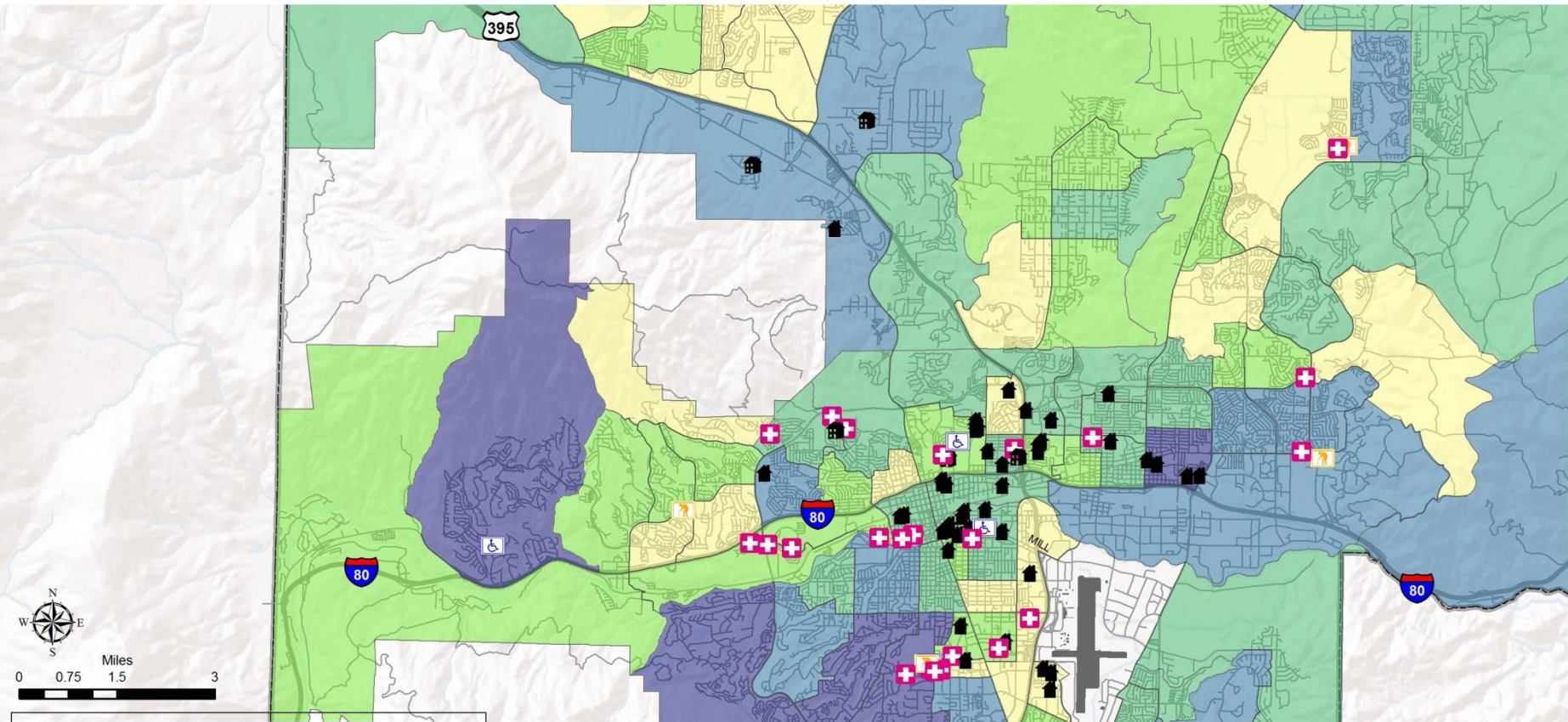


# Senior Population and Transit Opportunity



# Senior Population and Healthcare




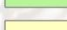





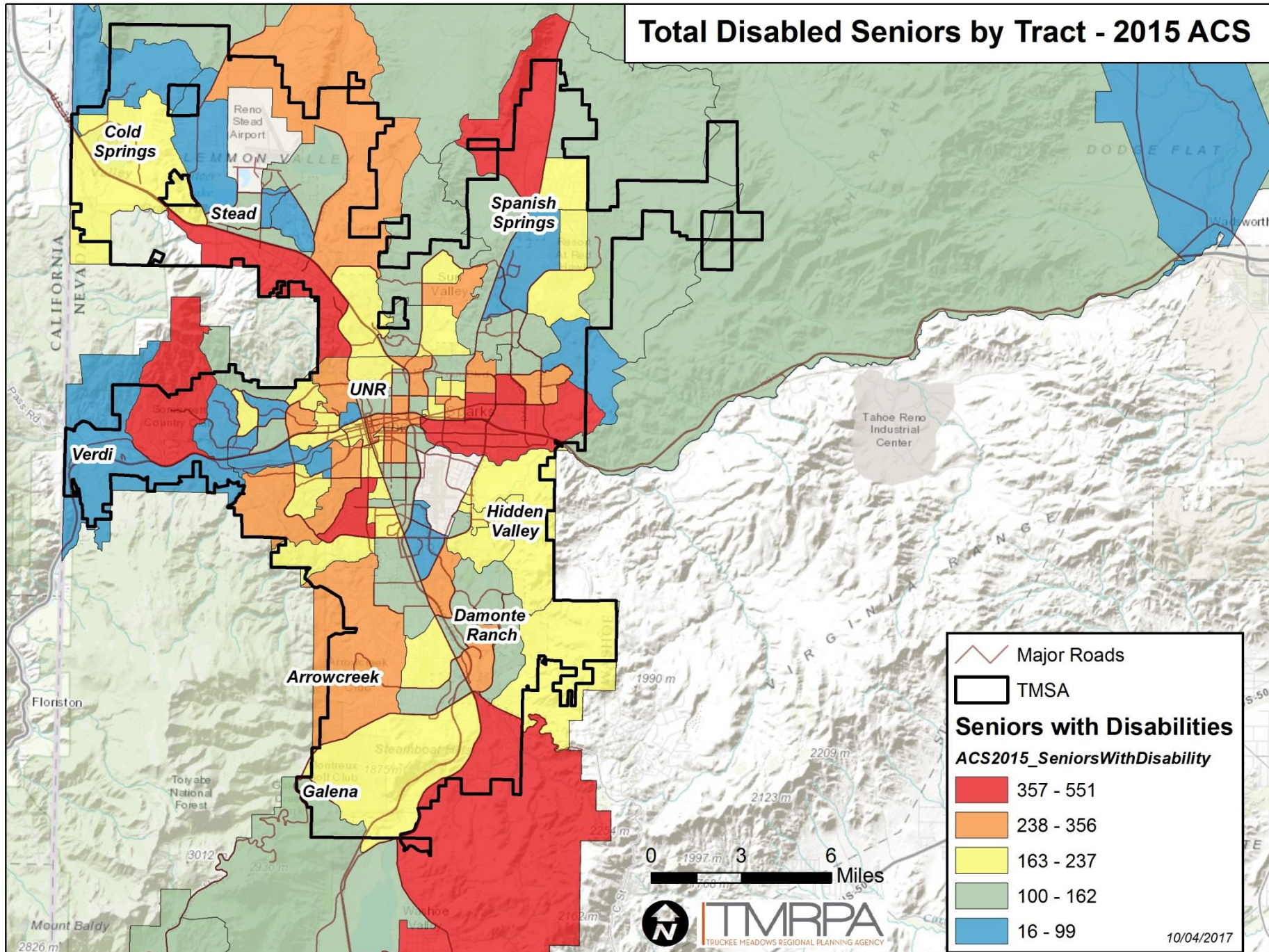
**Legend**








-  Independent Living
-  Assisted Living
-  Group Home
-  Dementia Care
-  Nursing Home
-  Washoe County Boundary
-  Freeways
-  Neighborhood Streets

**Total Seniors (2015 ACS)**

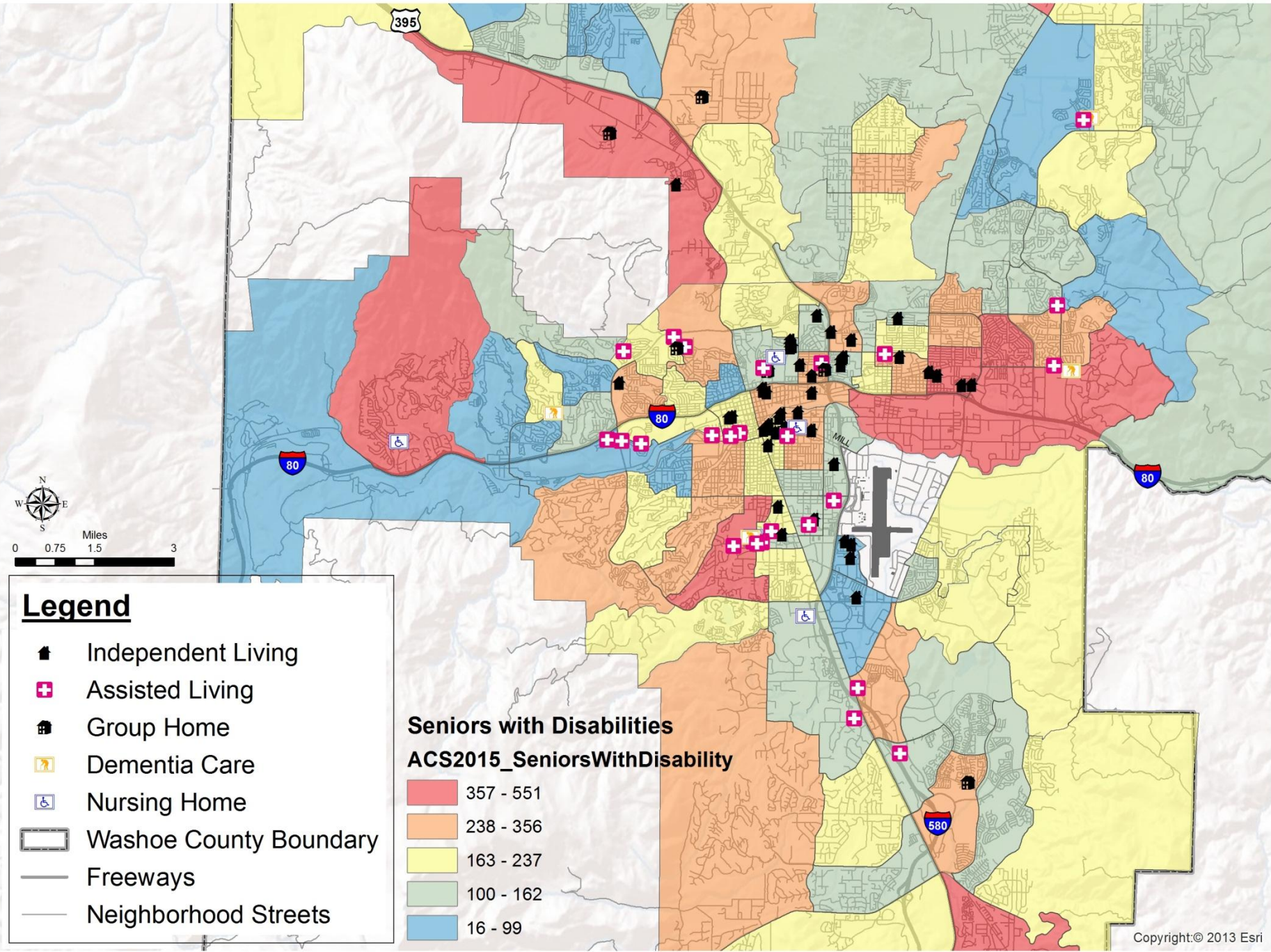
-  1045 - 1583
-  731 - 1044
-  487 - 730
-  323 - 486
-  189 - 322

# Total Disabled Seniors by Tract - 2015 ACS



 Major Roads  
 TMSA  
**Seniors with Disabilities**  
*ACS2015\_SeniorsWithDisability*  
 357 - 551  
 238 - 356  
 163 - 237  
 100 - 162  
 16 - 99





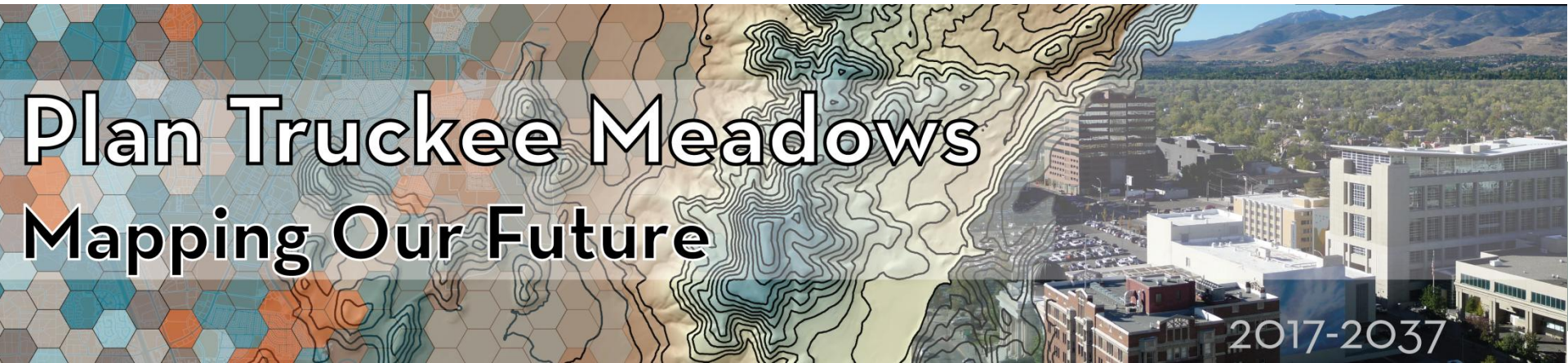
**Legend**

- Independent Living
- Assisted Living
- Group Home
- Dementia Care
- Nursing Home
- Washoe County Boundary
- Freeways
- Neighborhood Streets

**Seniors with Disabilities**  
**ACS2015\_SeniorsWithDisability**

- 357 - 551
- 238 - 356
- 163 - 237
- 100 - 162
- 16 - 99



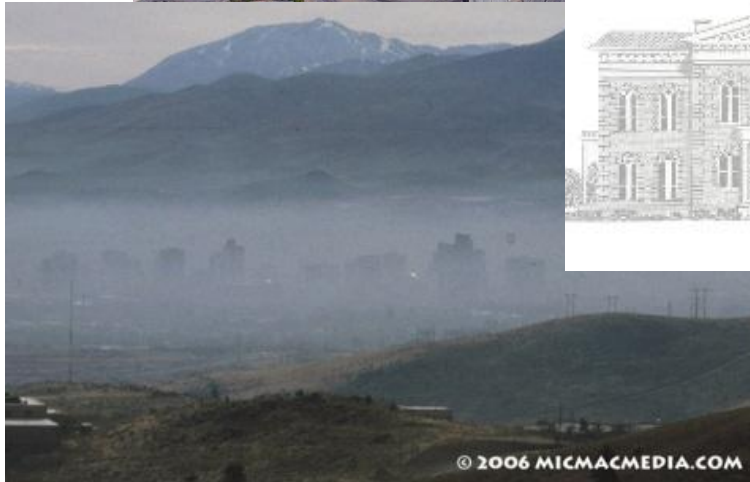


# Plan Truckee Meadows Mapping Our Future

2017-2037

## 2017 Truckee Meadows Regional Plan Update

# Who Are We?



# Why Plan Regionally?





WASHOE COUNTY  
**HEALTH DISTRICT**  
ENHANCING QUALITY OF LIFE

WESTERN REGIONAL  
WATER COMMISSION



**TMRPA**  
TRUCKEE MEADOWS REGIONAL PLANNING AGENCY



Washoe County  
School District



NORTHERN NEVADA WATER  
PLANNING COMMISSION

# Why Are We Here?



*Image Credit: City of Sparks*



*Image Credit: University of Nevada, Reno*



*Image Credit: Washoe County*

# Plan Truckee Meadows Mapping Our Future

2017-2037

Help shape the future of our community! Join us in updating the Truckee Meadows Regional Plan at:

[PlanTruckeeMeadows.org](http://PlanTruckeeMeadows.org)

Be sure to take our survey!



#MappingOurFuture



P: 775.321.8385

[www.tmrpa.org](http://www.tmrpa.org)